

THE POWER IS HERE

www.power-pro.tech



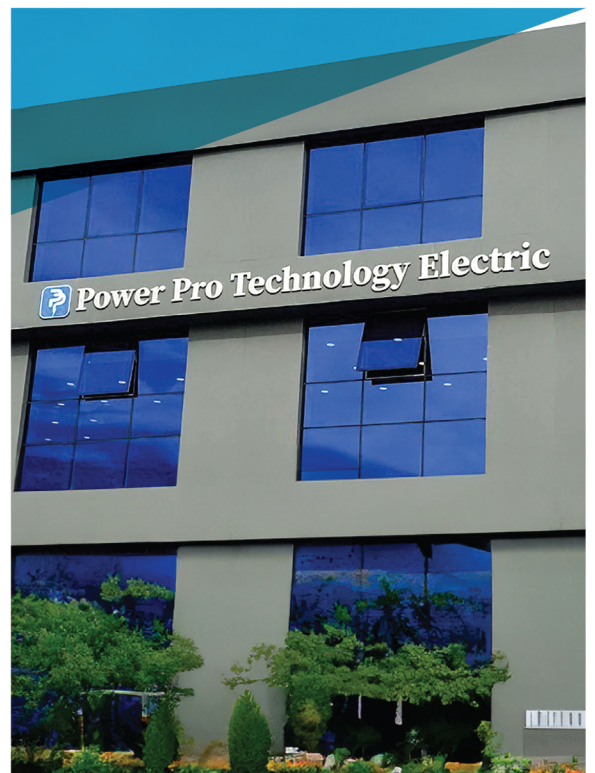
POWER PRO
TECHNOLOGY ELECTRIC

 **Power Pro Technology Electric**

ABOUT US

Power Pro Technology Electric

excels in the production of low-voltage panels, ensuring top-notch quality and reliability for safe electrical management. Our expertise extends to the maintenance of low-voltage and age panels, where they employ advanced techniques and stringent safety medium volt protocols to guarantee optimal performance and longevity through **Power pro Technology Electric** service centre.



With a strong commitment to innovation and customer satisfaction, **Power Pro Technology** Manufacturing stands at the forefront of the electrical equipment industry, delivering comprehensive solutions tailored to meet the diverse needs of its clients.

Power Pro Technology Electric Specializing also in the sale of Busbar processing Machines, which are essential for efficient electrical distribution in various industrial applications.

in various industrial applications.

02

ABOUT US

03

CONTENTS

04

OUR MISSION

05

OUR VISION

06

OUR PRODUCTS

09

SERVICES CENTER

13

BUSBAR PROCESSING MACHINE

15

OUR CLIENTS

16

OUR PROJECTS

20

OUR PARTNERS

23

WORLDWIDE

24

CERTIFICATES

26

CONTACT US



OUR MISSION

Power Pro Technology's mission is manufacturing superior low-voltage panels, and maintaining Medium -voltage panels. Committed to innovation and excellence, Power Pro Technology aims to deliver.

reliable, efficient and safe electrical distribution solutions tailored to meet diverse needs of its clients. Through continuous research and development, strategic electrical infrastructure, ensure operational efficiency, and contribute to safer and partnerships, and a customer centric approach, the company strives to enhance more sustainable energy future.

OUR VISION

Innovation in Electrical Solutions Cutting-Edge Technology: Staying at the forefront of electrical technology, including advancements in low-voltage panels, busbar systems, and related machinery.



QUALITY

Quality and Reliability High Standards: Ensuring that all products meet rigorous quality standards to provide reliable and safe electrical solutions. Customer-Centric Approach



Tailored Solutions

Offering customized solutions to meet specific customer requirements and application needs. Sustainability and Efficiency.



Energy Efficiency

Developing products that enhance energy efficiency and contribute to sustainable practices. Global Reach and Local .



Impact International Presence

Expanding global reach while understanding and addressing local market needs and regulations.



Research & Development

Investing in R&D to drive innovation and maintain a competitive edge in the industry. Safety and Compliance.



Regulatory Compliance

Ensuring all products meet relevant safety and industry standards and regulations.

OUR PRODUCTS

In the competitive world of electrical engineering, **PowerPro** stands out as a beacon of innovation and quality in the manufacturing of low-voltage panels. Since its inception, PowerPro has been dedicated to providing cutting-edge solutions that meet the evolving needs of the residential, commercial, and industrial sectors.



This systematic approach reduces errors and enhances the overall quality of the final product.

Testing is integral to ensuring the reliability of **PowerPro's** low-voltage panels.

Quality is paramount in the manufacturing of low-voltage panels, and **PowerPro's** component selection process reflects this commitment.





The manufacturing process at **PowerPro** begins with meticulous design and planning. The company employs a team of highly skilled engineers and designers who work closely with clients to understand their specific needs.

Using advanced Computer software, these professionals create detailed schematics and layout plans. These plans ensure optimal component arrangement, incorporating safety features and compliance with regulatory standards.



PowerPro's success is rooted in its commitment to innovation, quality, and customer satisfaction, principles that have guided its journey for nearly three decades.

PowerPro's is a leading player in the low-voltage panel manufacturing industry. The company has expanded its operations globally, serving clients across various sectors.



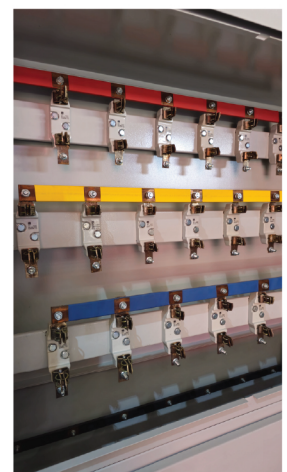
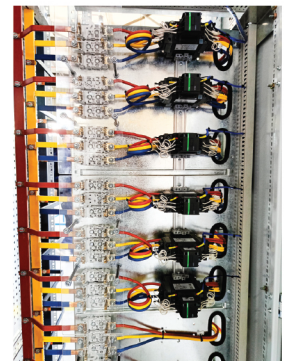
PowerPro's design process is highly collaborative. Regular consultations with clients ensure that every detail, from power requirements to physical constraints, is accurately captured.

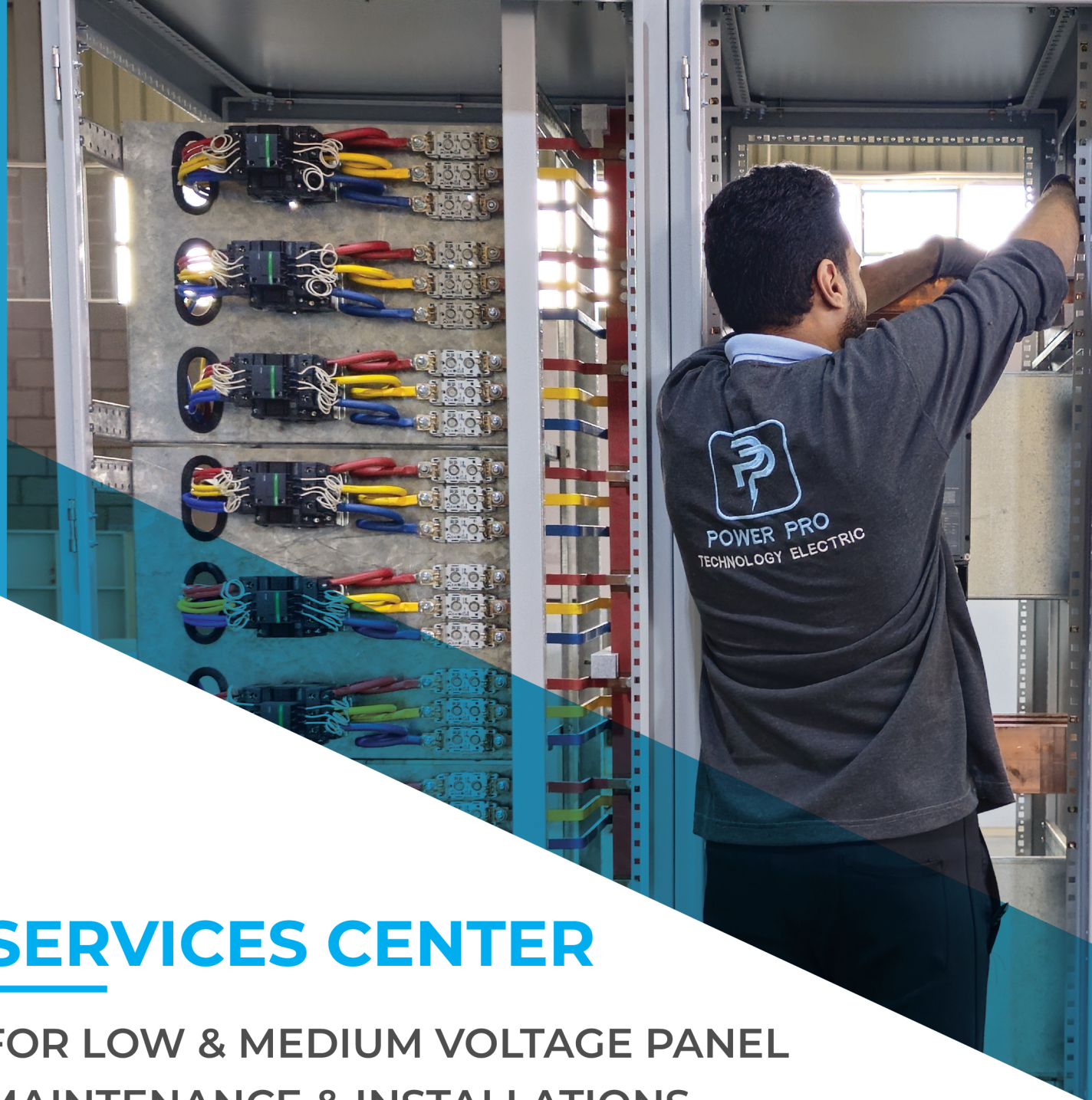
This client-centric approach not only meets customer expectations but also fosters long-term partnerships. Assembly at **PowerPro** is a critical phase where design becomes reality.

Skilled technicians meticulously install components onto the mounting plates or directly into the enclosures.

The wiring process follows, with technicians routing and connecting wires according to the detailed electrical schematics. Each connection is carefully checked for proper insulation and secure fastening to prevent short circuits and ensure long-term reliability.

The assembly process at **PowerPro** is streamlined to ensure efficiency without compromising quality. Every step is documented and monitored to maintain the highest standards.





SERVICES CENTER

FOR LOW & MEDIUM VOLTAGE PANEL MAINTENANCE & INSTALLATIONS

Each panel undergoes a series of rigorous tests in the company's dedicated testing facility. Initial tests include checks for continuity, insulation resistance, and dielectric strength, ensuring all connections are correct and secure. Functional testing simulates real-world conditions to verify the operation of all circuits and components.

This phase is crucial for identifying and rectifying any issues before the panel is delivered to the client.

PowerPro's comprehensive testing protocols ensure that each panel performs reliably under various conditions.

Medium Voltage Solutions

Power Pro Technology Electric is your end-to-end partner for medium voltage (MV) solutions. We supply, install, and commission high-quality equipment designed to deliver safe, reliable power in industrial, commercial, and infrastructure projects.

Scope of Supply & Installation

- MV Switchgear:
Indoor and outdoor designs (up to 24kV), metal-clad and modular systems.
- Ring Main Units (RMU):
SF₆, air-insulated, and solid dielectric types up to 24kV.
- Transformers:
Oil-immersed and dry type transformers (100kVA–5,000kVA) up to 24kV.

We handle all stages: electrical design, product selection, installation, testing, and commissioning — in full compliance with international standards such as IEC and ANSI





Medium Voltage

Maintenance & Service Center

Beyond supply and installation, Power Pro Technology Electric provides a full suite of maintenance and service solutions to keep your MV systems operating at peak performance.

Maintenance Capabilities

- Preventive, corrective, and predictive maintenance for MV switchgear, RMUs, and transformers.
- Relay and circuit breaker testing & calibration.
- Transformer oil testing, filtration, and dielectric maintenance.
- Equipment retrofitting, upgrades, and refurbishment.
- On-site diagnostics, troubleshooting, and emergency support.

Testing & Support Highlights

- Contact resistance and insulation tests.
- Circuit breaker timing & (synchronism) checks.
- Partial discharge and insulation integrity assessments.
- Relay coordination & protection settings.
- Technical support, spare parts, and upgrades.

We work with major brands such as Schneider, Siemens, ABB and Legrand ensuring compatibility and reliability across systems. Our goal is to minimize downtime, extend equipment life, and maximize system (performance).



**SAFETY
FIRST**



**QUALITY
ASSURANCE**

PowerPro's commitment to quality assurance is unwavering.

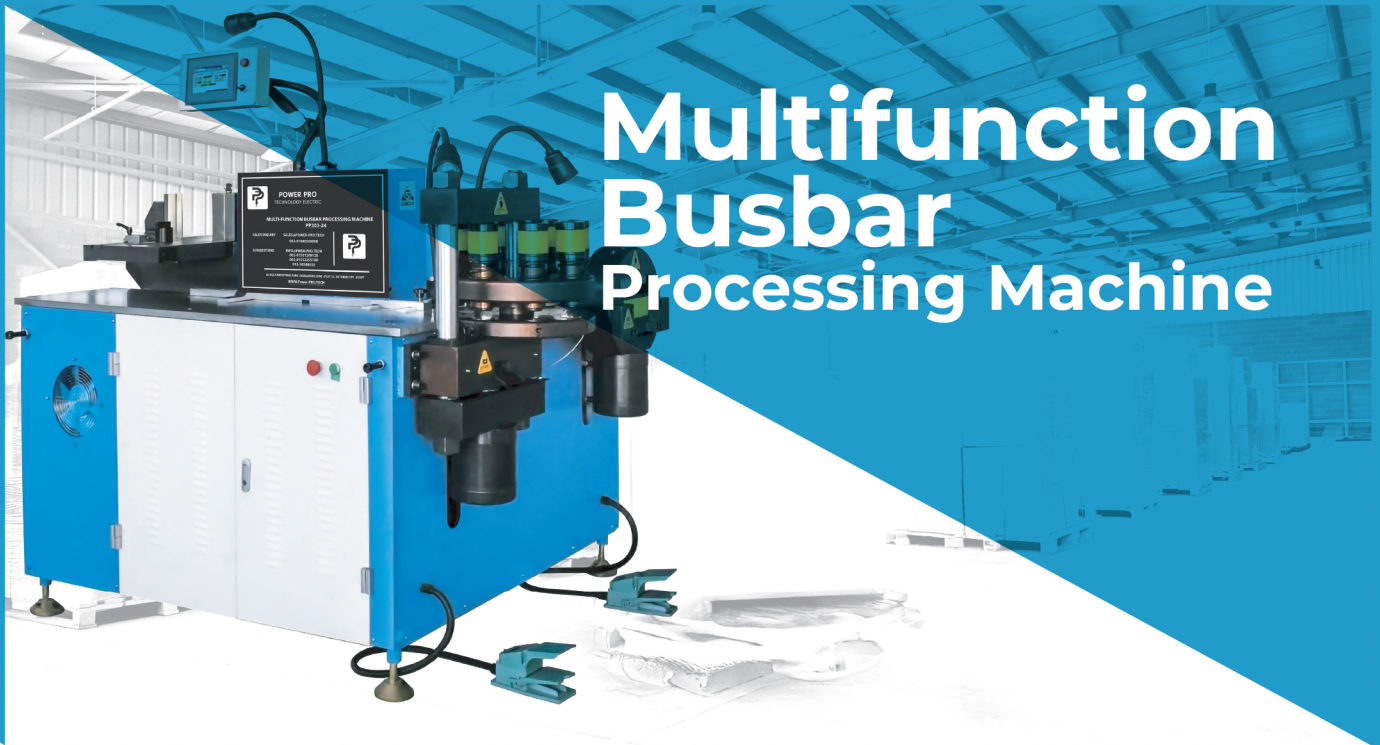
Every panel undergoes a detailed inspection to identify any defects or deviations from the design specifications. Ensuring the safe delivery of panels is a priority for PowerPro.

The company uses custom packaging solutions to protect the panels during transit.

PowerPro offers comprehensive installation and commissioning services.

The company's technicians prepare the site, install the panel, and make the final electrical connections.

Multifunction Busbar Processing Machine



PRODUCT SPECIFICATIONS

•Punching unit :

The punching unit adopts turret mold library, which can store eight sets of punching molds or seven sets of punching molds plus one set of embossing molds .

• Shear unit :

The shear unit adopts circular integral structure, which is novel and unique in design and reasonable in force, and can effectively be used for long time without deformation.

• Bending unit :

The bending unit adopts the whole structure, the Angle NC method, the operation is simple and the precision is high.

• Work environment :

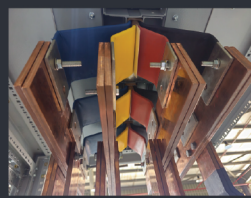
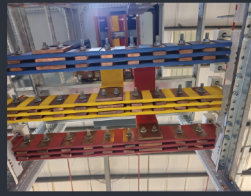
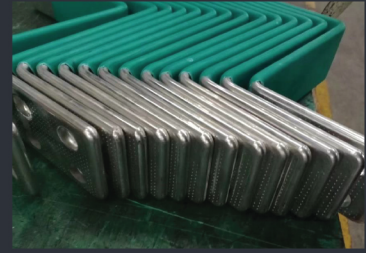
This machine adopts the double-layer workbench design scheme, truly achieve three stations at the same time, do not affect each other.

• Feeding and Discharging system :

The machine is equipped with automatic feeding and discharging system, easy to operate

• Control system : PLC control, stable and reliable.





1- Punching unit:

The use of ductile iron material eight mold position integral turntable, turntable as a whole processing workpiece, mold installation hole for CNC machining, high precision long life, through the replacement of the mold can complete punching hole, square hole, embodying and other processes.

2- Shear unit:

The use of integrated forging shear structure, can ensure long-term use never deformation, vertical and parallel installation of the upper & lower knives, to ensure smooth cutting, no waste, avoid the double column shear structure of different heart defects, the use of single shear, shear without waste, can save raw materials.

3- Bending unit:

ductile iron integrated casting open structure, to ensure long-term use without deformation. Compared with the closed structure fixed with beam and screws, its mold is simple, convenient to replace & more accurate to see the bending point. By replacing the mold, it can be used to bend flat, bend upright, bend pipe, press wire nose, bend copper rod and other operations.

OUR CLIENTS

such a valuable partner ”
“ Thank you for being





OUR PROJECTS





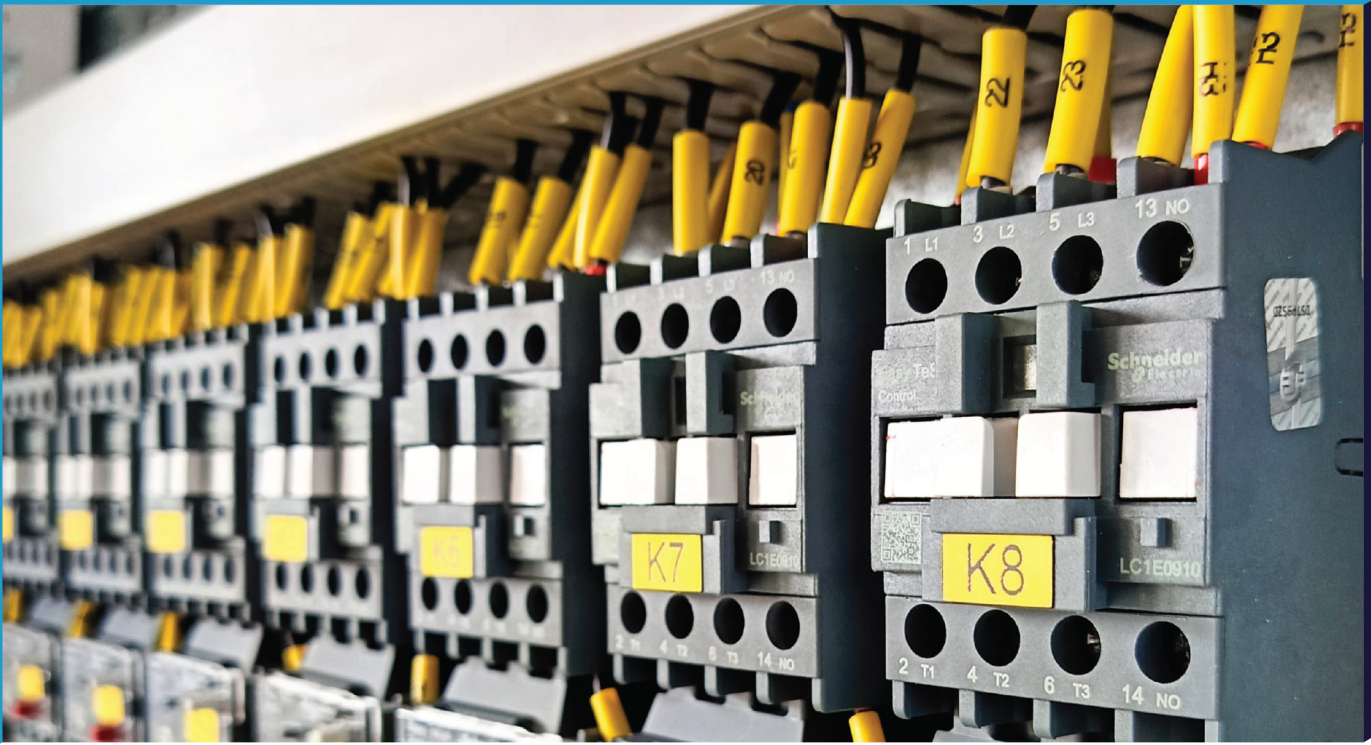
OUR PROJECTS





OUR PROJECTS





OUR PROJECTS





OUR PARTNERS IN SUCCESS

We believe that great things happen when the right people come together. Our success partners are more than collaborators – they're part of our story. With shared values, trust, and a spirit of teamwork, we've built strong connections that help us all grow. We're truly grateful for every partner who walks this journey with us, and we look forward to achieving even more together.



Schneider Electric :

is a global leader in energy management and automation, specializing in electrification, automation, and digitization. They provide end-to-end solutions for various sectors, including smart industries, resilient infrastructure, data centers, intelligent buildings, and homes, focusing on sustainability and efficiency.



ABB (Asea Brown Boveri) :

is a global technology leader in electrification and automation, aiming to create a more sustainable and resource-efficient future. they offer a wide range of products and services, including electrification solutions (power distribution and management), robotics, and automation.



Legrand:

is a global specialist in electrical and digital building infrastructures, offering a wide range of products and solutions for commercial, residential, and industrial spaces. Founded in 1860, the company has established a strong presence worldwide, operating in over 90 countries and distributing its products in nearly 180. Legrand focuses on enhancing the digital and electrical infrastructure of buildings, contributing to increased efficiency and sustainability.



CHINT Group Co.:

Ltd., commonly known as CHINT, is a global leader in smart energy solutions. Founded in 1984, CHINT has expanded to over 140 countries and regions, with more than 50,000 employees. CHINT's core businesses include clean energy, energy allotment, big data, and energy value-added services

FROM **POWER PRO** TO WORLDWIDE

It is a great honor to serve clients beyond our borders, and we are truly proud to have your confidence in our services.



SAUDI ARABIA



United Arab Emirates



Sultanate of Oman



Morocco



Nigeria

OUR CERTIFICATES



شهادة اعتماد الشركة القابضة لكهرباء مصر حتى 4000 أمبير



شهادة استيفاء نسبة المكون المصري



شهادة وزارة التجارة والصناعة



اعتماد وزارة الكهرباء والطاقة المتجددة



**شهادة اعتماد شركة
Legrand الفرنسية
(Certified panel builder)**



شهادة السجل الصناعي



POWER PRO
TECHNOLOGY ELECTRIC

**THE POWER
IS HERE**



CONTACT US

+02 385 88 303
+0108 050 0008
+ 0155 555 7416

info@power-pro.tech
sales@power-pro.tech

Al-Oula Industrial Park - Developers area
Plot 12 - 6 October City - Giza - Egypt